



2026 Parade Theme

250 Years of Freedom; 150 Years of Colorado Statehood

ALMOST EVERY YEAR A CHILD DIES SOMEWHERE IN THE UNITED STATES AFTER BEING RUN OVER BY A FLOAT DURING A 4TH OF JULY PARADE. **THIS HAS NEVER HAPPENED DURING THE MONUMENT PARADE.** LET'S MAKE SURE WE KEEP OUR RECORD PERFECT.

OUR FIRST GOAL IS A SAFE PARADE. Your signature on the entry form is your legal commitment to follow the rules. PLEASE SET AN EXAMPLE & PROTECT OUR CHILDREN.

The parade is a non-profit activity of the Monument Hill Kiwanis Club, this year being held on Saturday, July 4, 2026

The parade theme this year is **250 Years of Freedom; 150 Years of Colorado Statehood**

Click [HERE](#) for lineup information and maps.

REGISTRATION – The registration fee is **\$75**. Veteran's & Military groups, Boy Scout and Girl Scout units, Bands, First Responders, and School groups are exempt from the fee.

To register:

- a. Go to www.monumenthillkiwanis.org, click on Uncle Sam's hat in the left panel, read the rules and complete the registration form. If you are NOT exempt from the **\$75.00** registration fee, you will be directed to credit card entry upon submission of your application.

NOTE: Do not include payment for a Street Fair booth. The Street Fair is a separate event, run by the Tri-Lakes Chamber of Commerce. For information, go to www.trilakeschamber.com.

RESTRICTIONS:

- a. **No vehicles/floats over 35 feet in length are permitted.** They endanger spectators when turning corners.
- b. Parking on Old Denver Highway is not permitted except for floats and motorized entries.
- c. South End parking off Old Denver Hwy at the **Woodmen Valley Chapel** is for **participant** passenger vehicles only.
- d. South End parking is limited to **2 vehicles per entrant** unless they coordinate ahead of time with the Monument Hill Kiwanis Club parade managers: Frank DeLalla at fdelalla@aol.com or Mark Zeiger at mark.zeiger@gmail.com.
- e. Handicapped parking is limited and transportation to lineup positions is by school bus which has no special ADA modifications. The buses also cannot handle **pets**, bicycles, wagons, **large** non-foldable strollers, or other like items.
- f. If you have a large number of people riding a float or motorized vehicle it is recommended you load people before the float/vehicle goes to its lineup position. The best location for this is the Santa Fe Trail parking lot on Old Denver Hwy and Baptist Rd.
- g. If you have a large number of pedestrians, you must car/van pool, or park at one of the designated remote parking spots at Lewis-Palmer High School.

SCHEDULE - The Parade will be conducted on the following schedule:

7:00 AM	All Parade Entrants must enter through the South Baptist Road Entry Point
7:00 AM – 8:00 AM	Parade lineup: No parking on the Old Denver Highway lineup route except for floats and motorized entries.
8:30 AM – 9:30 AM	Judging
9:45 AM	Children's Parade starts
10:00 AM	Parade starts

JUDGING - Ribbons will be awarded to Distinguished Entries that best reflect a combination of theme, quality, and spirit. Entries may be judged in one or more of the following categories:

- ★ **Equestrian** - If your entry includes horses, it is judged in the "Equestrian" category.
- ★ **Float** - A "float" is more than a simple towed flatbed or motorized vehicle. **Decorated vehicles are not floats.** Floats must exhibit creativity and effort. Floats may be self-propelled, pushed (with suitable driver visibility), or towed. Such entries will be judged in the "Float" category.
- ★ **Military** - Entries with military themes or military members (active, reserve, guard, retired, or otherwise having served in any of the six branches of the United States Armed Services) will be judged in the "Military" category.
- ★ **Motorized** - If your entry contains a vehicle of any sort, other than a float, it will be judged in the "Motorized" category.
- ★ **Pedestrian** - If your entry has no motorized vehicles (cars, ATVs, motorbikes, etc.) with or without animals, the entry will be judged in the "Pedestrian" category.

CHILDREN'S PARADE - Items a. - g. below apply to the Children's Parade ONLY

- a. For the Children's Parade only, there is no entry fee/registration. All children are welcomed, and parents may accompany their children.
- b. Parents are encouraged to have their children in the **south** parking lot at St Peter Catholic Church, Jefferson St., Monument by 8:00 AM but no later than 8:30 AM. **Parking is not available in this parking lot or in the Grace Best School parking lot.**
- c. The Children's Parade ends at the corner of 2nd Street and Beacon Lite. Parents are responsible for retrieving any unaccompanied children at the end of the parade.
- d. Parents may pull or push children in suitable wheeled transport. Children may ride bicycles but must be able to stay at parade pace, stopping as necessary to maintain that pace.
- e. **No motorized vehicles, bikes, or scooters are allowed.**
- f. Unaccompanied children must abide by the direction of the Children's Parade Director through the completion of the parade route.
- g. **It is often hot at parade time so water and snacks are a must for children participating in the parade.** Check the weather & make sure your children are suitably attired.

PARADE RULES & REGULATIONS

To ensure a safe, fun event for everyone, **your adherence to the following rules is mandatory:**

- a. Entries must have liability insurance and provide proof, on request. It is not necessary to send a copy of your insurance with your registration.
- b. Drivers of entries must hold a valid driver's license and be insured. Random checks may be made by the Parade Marshals along the route.
- c. Units from political organizations may be entered in the parade. Campaigning on issues **MAY NOT** be conducted during the parade. Political entries will not be judged.
- d. To be judged, entries must be in line in their designated sequence no later than 8:30 am.
- e. **Follow the directions of the Line-up Marshals.** Do not expect to go to the start line and wait your turn. Line-up Marshals will ask you to stop in a position on Old Denver Road, according to your number. If you arrive early, please do not pass the South Entry Point until directed to do so.
- f. No semi-trucks with trailers are allowed.
- g. Entries must be able to turn 90° corners on narrow streets without running over spectators.
- h. **NOTHING MAY BE THROWN FROM ENTRIES SO THAT IT LANDS IN THE STREET** (this includes candy, toys, flyers & water bottles). **Water balloons or water dispensing equipment are expressly prohibited.** Members of your group may walk beside your entry throughout the parade route and hand out candy or other items OFF the street. **Think safety.**
- i. Each equestrian entry with animals **must** provide immediate cleanup after their entry during the entire parade route including staging. Units in sequence may combine this service but must indicate their agreement clearly on the entry form.
- j. Entries should demonstrate a connection to the theme "**250 Years of Freedom; 150 Years of Colorado Statehood**".
- k. Clearly identify your organization and display your entry # on ALL elements of your entry (e.g., car/collectors clubs with several vehicles must display their entry number on every vehicle). A few days before the parade you will be sent an email informing you of

your lineup positions. There will be an initial notification to allow you to request necessary changes followed by a final lineup notification.

- l. Keep the parade moving; maintain no more than 35 feet between the entry in front of you. More space tempts spectators to cross the parade route, which is extremely dangerous. **Obey the parade marshals.**
- m. **Please obey the parade marshals and police units at the end of the parade route (Beacon Lite Road and Second Street) to avoid congestion when participants are off-loading floats and other parade items.**
- n. Parade units violating any of the rules contained herein may, at the discretion of the Parade managers, be removed from the Parade, disqualified for Awards, and denied entry into future parades.

Questions? Email or call the parade directors:

Frank DeLalla 719-339-3567

Mark Zeiger 719-494-7718

Email: fdelalla@aol.com

mark.zeiger@gmail.com

Registration ends on June 28, 2026

To go to the online registration page, click [HERE](#)

Facilities Map

NOTICE
NO PARKING ALONG PARADE ROUTE
VEHICLES WILL BE TOWED

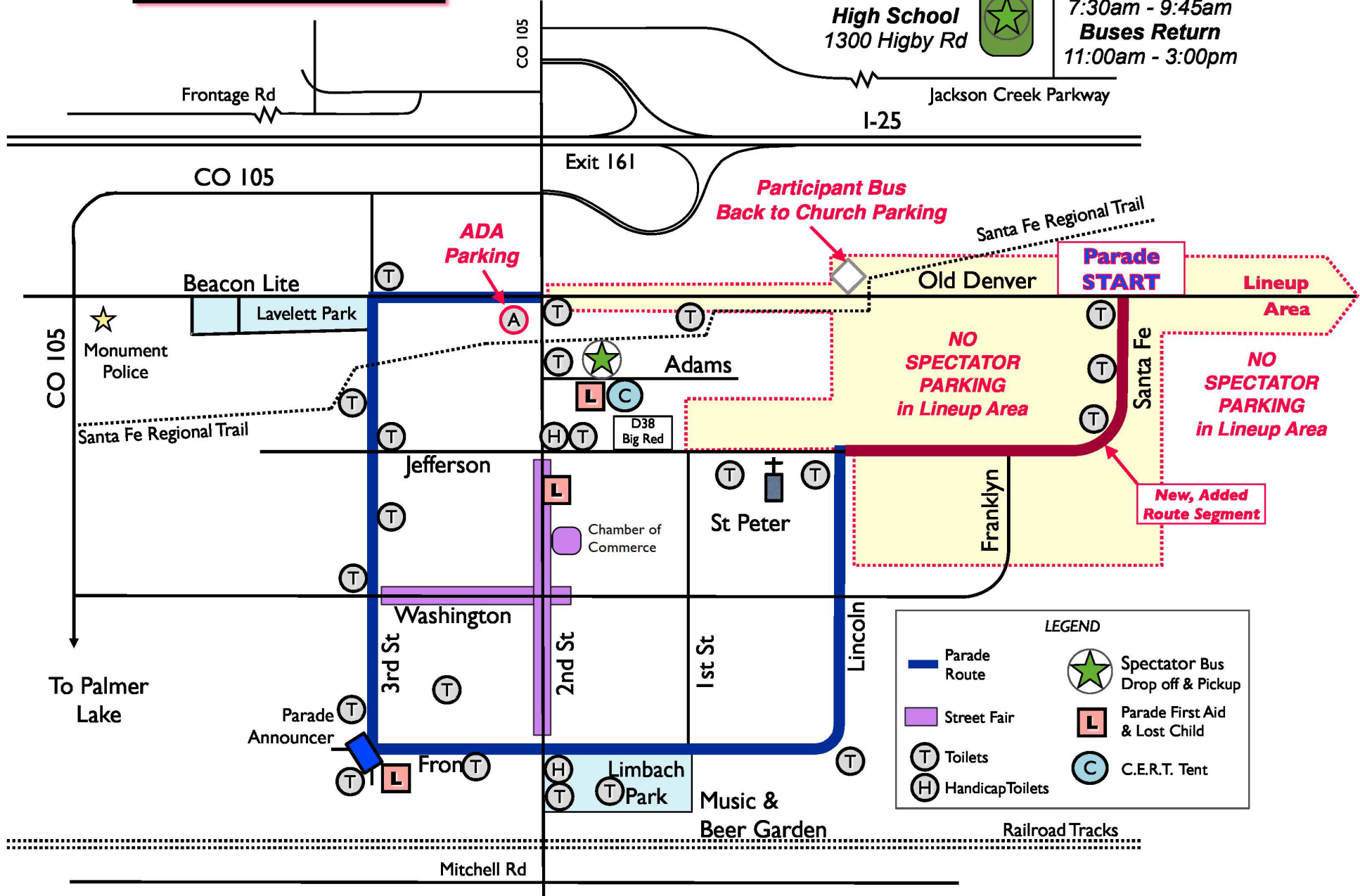


PUBLIC PARKING

Lewis-Palmer
 High School
 1300 Higby Rd



Buses Depart
 7:30am - 9:45am
Buses Return
 11:00am - 3:00pm



LEGEND

- Parade Route (Blue line)
- Street Fair (Purple shaded area)
- Toilets (T in circle)
- Handicap Toilets (H in circle)
- Spectator Bus Drop off & Pickup (Green star in circle)
- Parade First Aid & Lost Child (L in square)
- C.E.R.T. Tent (C in circle)

Participant Bus Back to Church Parking

Parade START

Lineup Area

NO SPECTATOR PARKING in Lineup Area

NO SPECTATOR PARKING in Lineup Area

New, Added Route Segment

To Palmer Lake

Mitchell Rd

Railroad Tracks

Expanded Map

NOTICE
NO PARKING ALONG PARADE ROUTE
or IN PARADE LINEUP AREA

VIOLATORS WILL BE TOWED

